

ITEM NO.	PART NUMBER	DESCRIPTION	QTY.
1	K1672KT-T	Top Leg Clamp Kit for T1671 & 72 Sectors	1
2	K1672KT-B	Bottom Leg Clamp Kit - T1671&72 Sectors	1
3	K0030KT4B	Brace Angle, 48" Long	4
4	P1000KT12.5	2-3/8" OD Pipe, 150" Long	2
5	K0072KT12	Face angle, 12.5' (ATT WLL)	2
6	K0082KT	Standoff Angle, 58.75" (ATT WLL)	4
7	K1672KT-HW	Hardware Kit for T1671KT12 & T1672KT12	1

Load Ratings									
Load Rating - Bare Condition for each pipe					Load Rating - Iced Condition for each pipe				
Antenna pipes per Sector	Basic Wind Speed (mph)	(EPA) N (sq ft)	(EPA) T (sq ft)	Factored Weight (lbs)	Basic Wind Speed (mph)	Design Ice Thickness (ti) (in)	(EPA) N (sq ft)	(EPA) T (sq ft)	Factored Weight (lbs)
5	120	17.5	17.5	530	60	1.0	24.0	24.0	1060

- Designed in accordance with ANSI/TIA-222-G
- Structure Class II
 - Galvanized Steel, A36 minimum grade
 - Exposure Category C (Rev G or H)
 - Topographic Category 1
 - Mount and antenna centerline at 300' AGL (use for gust and height factors)
 - Gust effect factor, $G_h = 1.0$
 - Wind direction probability factor, $K_d = 0.95$
 - 3-second gust basic wind speed, 50-year return, for bare conditions as noted in table
 - 3-second gust basic wind speed, 50-year return, considered simultaneously for iced conditions as noted in table

EPA of Base Unit
(EPA)N = ~19.00 ²

NOTES:
 The range of the stiffarms will be the following:
 20 deg towards the tower (from perpendicular to the face angle)
 30 deg away from the tower (from perpendicular to the face angle)

Antenna Pipes should be centered and evenly spaced.
 Mount Classification: Satisfies Heavy WLL



UNLESS OTHERWISE SPECIFIED: DIMENSIONS ARE IN INCHES TOLERANCES: FRACTIONAL: ± 1/32 ANGULAR: ± 2° ONE PLACE DECIMAL: ± .06 TWO PLACE DECIMAL: ± .03 THREE PLACE DECIMAL: ± .010		NAME KAR	DATE 4/6/16
INTERPRET GEOMETRIC TOLERANCING PER:		CHECKED	
MATERIAL		ENG APPR.	
FINISH		MFG APPR.	
DO NOT SCALE DRAWING		PROPRIETARY AND CONFIDENTIAL	
THE INFORMATION CONTAINED IN THIS DRAWING IS THE SOLE PROPERTY OF KENWOOD TELECOM. ANY REPRODUCTION IN PART OR AS A WHOLE WITHOUT THE WRITTEN PERMISSION OF KENWOOD TELECOM IS PROHIBITED.			

KENWOOD TELECOM

TITLE: Sector Frame, 12' Face (WLL) Angle Face

SIZE B	DWG. NO. T1672KT12	REV
SCALE: 1:18 FINISHED WEIGHT: 607.65 lbs		SHEET 1 OF 1

VERIZON SPECIFICATIONS T1672KT12

Minimum Required Mount Classifications for each Market		
Market	Bare	Iced
North East	M900R-4[6]	M1150R(i)-4[6]
South East	M1400R-4[6]	M1000R(i)-4[6]
Great Lakes	M800R-4[6]	M1150R(i)-4[6]
North Central	M800R-4[6]	M1000R(i)-4[6]
South Central	M1000R-4[6]	M1150R(i)-4[6]
Pacific	M700R-4[6]	M1000R(i)-4[6]
Alaska	M1000R-4[6]	M1000R(i)-4[6]
Hawaii	M950R-4[6]	-

Designed in accordance with TIA-222-G-4



- Structure Height \leq 400 feet
 - Structure Class or Risk I or II
 - Galvanized Steel, A36 minimum grade
 - Exposure Category B or C
 - Topographic Category 1
 - Maximum 140 mph, 50-year return, 3-second gust basic wind speed
 - Maximum 180 mph, ultimate 3-second wind speed based on risk category
 - Maximum 1 inch, 50-year return design ice thickness
 - Maximum 2 inch, ultimate design ice thickness based on risk category
 - Maximum 60 mph basic wind speed occurring simultaneous with ice
-
- Factored wind pressure without ice at mounting elevation $\alpha(qz)(Gh) \leq 135$ psf
 - Factored ice thickness at mounting elevation $t_{iz} \leq 2.75$ inches
 - Factored wind pressure with ice at mounting elevation $\alpha(qz)(Gh) \leq 15$ psf

AT&T SPECIFICATIONS T1672KT12

Load Ratings									
Load Rating - Bare Condition for each pipe					Load Rating - Iced Condition for each pipe				
Antenna pipes per Sector	Basic Wind Speed (mph)	(EPA) N (sq ft)	(EPA) T (sq ft)	Factored Weight (lbs)	Basic Wind Speed (mph)	Design Ice Thickness (ti) (in)	(EPA) T (sq ft)	(EPA) T (sq ft)	Factored Weight (lbs)
4	120	15.0	15.0	663	60	1.0	24.0	24	1325

Designed in accordance with ANSI/TIA-222-G

- Structure Class II
- Galvanized Steel, A36 minimum grade
- Exposure Category C (Rev G or H)
- Topographic Category 1
- Mount and antenna centerline at 300' AGL(use for gust and height factors)
- Gust effect factor, $G_h = 1.0$
- Wind direction probability factor, $K_d = 0.95$
- 3-second gust basic wind speed, 50-year return, for bare conditions as noted in table
- 3-second gust basic wind speed, 50-year return, considered simultaneously for iced conditions as noted in table

 KENWOOD TELECOM <small>3431 Novis Pointe Acworth, Ga 30101 (770) 975-0500 office (770) 974-5100 fax</small>	UNLESS OTHERWISE SPECIFIED: DIMENSIONS ARE IN INCHES TOLERANCES: FRACTIONAL: $\pm 1/32$ ANGULAR: $\pm 2^\circ$ ONE PLACE DECIMAL: $\pm .06$ TWO PLACE DECIMAL: $\pm .03$ THREE PLACE DECIMAL: $\pm .010$		NAME KAR	DATE 5/9/17	 KENWOOD TELECOM TITLE:
	INTERPRET GEOMETRIC TOLERANCING PER:		PROPRIETARY AND CONFIDENTIAL		
	MATERIAL	THE INFORMATION CONTAINED IN THIS DRAWING IS THE SOLE PROPERTY OF KENWOOD TELECOM. ANY REPRODUCTION IN PART OR AS A WHOLE WITHOUT THE WRITTEN PERMISSION OF KENWOOD TELECOM IS PROHIBITED.			
	FINISH	DO NOT SCALE DRAWING	SIZE B	DWG. NO. T1672KT12	
SCALE: 1:18 FINISHED WEIGHT:				SHEET 1 OF 1	

8 7 6 5 4 3 2 1

Connection Point B:
Pivot Plate(slots) to Taper Adjustment
Use Item #2, **5/8" x 2-1/2" Bolt Kits**

Connection Point A:
Pivot Plate(Hole) to Taper Adjustment
Use Item #1, **3/4" x 2-3/4" Bolt Kits**

Connection Point C:
Pivot Plate to Standoff Angles
Use Item #4, **5/8" x 2-1/4" Bolt Kits**

Connection Point D:
X-Bracing connection
Use Item #5, **1/2" x 1-1/2" Bolt Kits**

Leg Clamp
See Pg 4

Detail: A

ITEM NO.	PART NUMBER	DESCRIPTION	QTY.
1	K1032KT234-2	3/4"X2-3/4" fastener kit A325 HDG (2)	1
2	K1029KT214-4	5/8" x 2-1/4" A325 bolt kit (4 bolts)	3
3	K1029KT212	A325 5/8"x2-1/2" kit (4 ea)	1
4	K1026KT112	A325 1/2"x1-1/2" Bolt Kit (10 ea)w/ (4) washers	1
5	K7940KT14-2	U-bolt kit, 2-7/8" OD pipe (2-Ubolt)	5
6	K1004KT1	Crossover clamp kit , 2-3/8" x 2-3/8"	2
7	K1004KT2	Crossover clamp kit, 2-3/8" x 5"	2
8	K1120KT9	Pivot Plate (Heavy 10 & WLL)	2

D

D

C

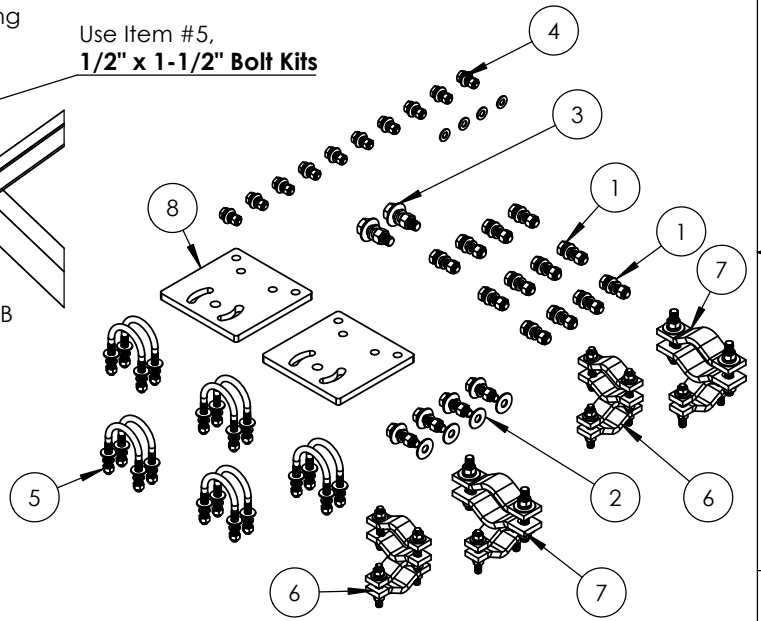
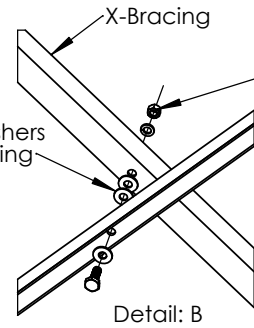
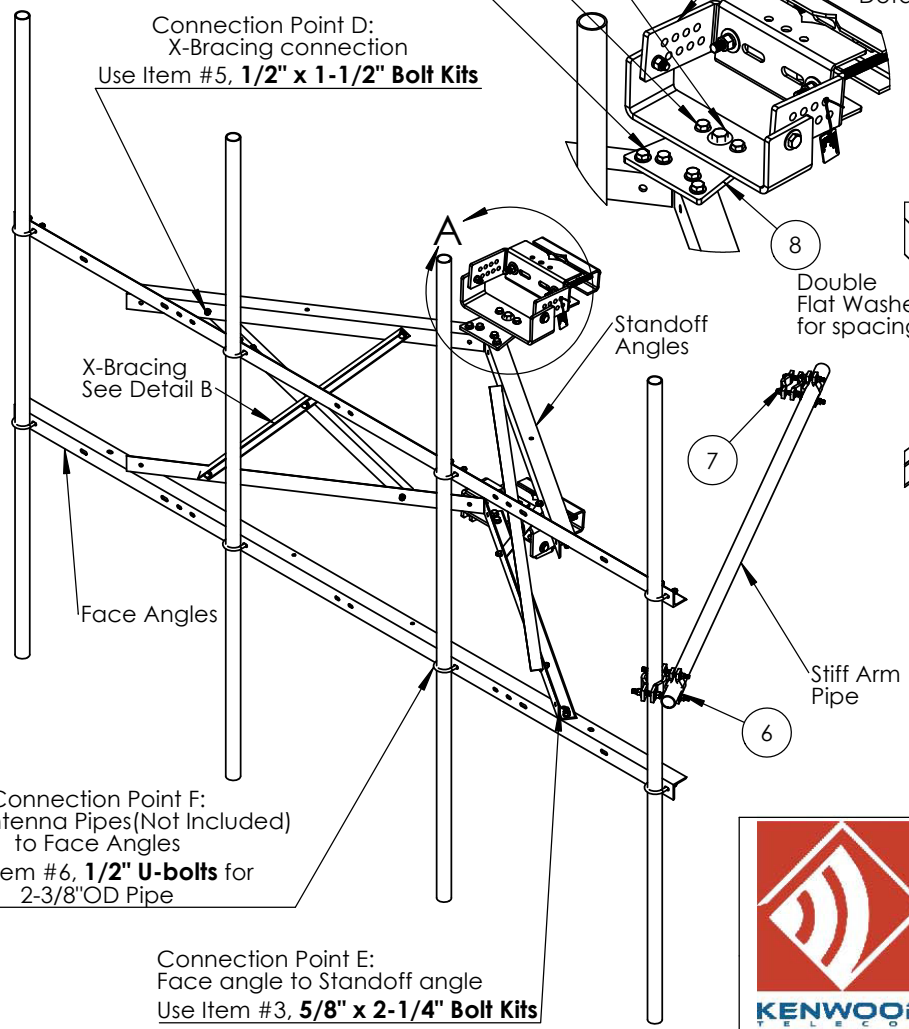
C

B

B

A

A



Connection Point F:
2-3/8" Antenna Pipes(Not Included)
to Face Angles
Use Item #6, **1/2" U-bolts** for
2-3/8"OD Pipe

Connection Point E:
Face angle to Standoff angle
Use Item #3, **5/8" x 2-1/4" Bolt Kits**

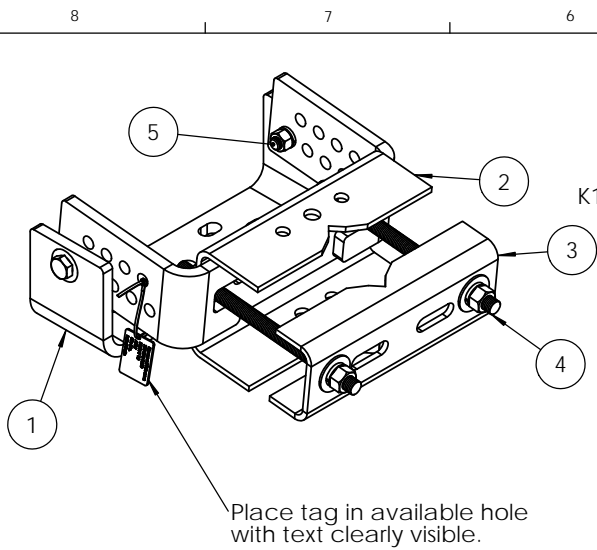


3431 Novis Pointe Acworth, Ga 30101
(770) 975-0500 office (770) 974-5100 fax

UNLESS OTHERWISE SPECIFIED: DIMENSIONS ARE IN INCHES TOLERANCES: FRACTIONAL: ± 1/32 ANGULAR: ± 2° ONE PLACE DECIMAL: ± .06 TWO PLACE DECIMAL: ± .03 THREE PLACE DECIMAL: ± .010		NAME	DATE
INTERPRET GEOMETRIC TOLERANCING PER:		DRAWN	KAR
MATERIAL		CHECKED	
FINISH		ENG APPR.	
DO NOT SCALE DRAWING		MFG APPR.	
PROPRIETARY AND CONFIDENTIAL			
THE INFORMATION CONTAINED IN THIS DRAWING IS THE SOLE PROPERTY OF KENWOOD TELECOM. ANY REPRODUCTION IN PART OR AS A WHOLE WITHOUT THE WRITTEN PERMISSION OF KENWOOD TELECOM IS PROHIBITED.			

TITLE: Sector Frame Hardware Kits For AT&T Heavy 10 & WLL VZW M1400R-4[6] & M1250R(i)-4[6]	
SIZE	DWG. NO.
	K1672KT-HW
SCALE: 1:8	FINISHED WEIGHT:
	SHEET 1 OF 1

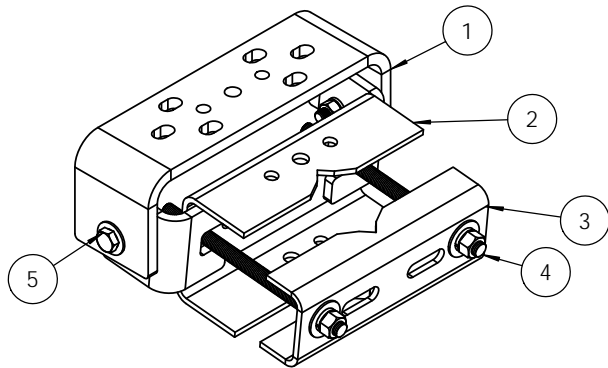
8 7 6 5 4 3 2 1



K1672KT-T - Top Leg Clamp Kit

ITEM NO.	PART NUMBER	DESCRIPTION	QTY.
1	K1672KT-02	Taper Adjustment Connector	1
2	K1672KT-01	Leg Channel, Top Clamp (ATT H10 & WLL)	1
3	K1672KT-04	Leg Channel, Inner (Heavys)	1
4	K2320KT18iA-2	Threaded rod kit 3/4" x 18" (Set of 2) HDG B7	1
5	K1029KT212-2	A325 5/8"x2-1/2" kit (2 ea)	1

K1672KT-B - Bottom Leg Clamp Kit



ITEM NO.	PART NUMBER	DESCRIPTION	QTY.
1	K1672KT-02	Taper Adjustment Connector	1
2	K1672KT-03	Leg Channel, Bottom Clamp (Heavys)	1
3	K1672KT-04	Leg Channel, Inner (Heavys)	1
4	K2320KT18iA-2	Threaded rod kit 3/4" x 18" (Set of 2) HDG B7	1
5	K1029KT212-2	A325 5/8"x2-1/2" kit (2 ea)	1



UNLESS OTHERWISE SPECIFIED:
 DIMENSIONS ARE IN INCHES
 TOLERANCES:
 FRACTIONAL: ± 1/32
 ANGULAR: ± 2°
 ONE PLACE DECIMAL: ± .06
 TWO PLACE DECIMAL: ± .03
 THREE PLACE DECIMAL: ± .010
 INTERPRET GEOMETRIC TOLERANCING PER:
 MATERIAL:
 FINISH:
 DO NOT SCALE DRAWING

NAME	DATE
DRAWN KAR	8/23/18
CHECKED	
ENG APPR.	
MFG APPR.	

PROPRIETARY AND CONFIDENTIAL

THE INFORMATION CONTAINED IN THIS DRAWING IS THE SOLE PROPERTY OF KENWOOD TELECOM. ANY REPRODUCTION IN PART OR AS A WHOLE WITHOUT THE WRITTEN PERMISSION OF KENWOOD TELECOM IS PROHIBITED.

		TITLE: Sector Frame Leg Clamp Assemblies for AT&T Heavy 10 & WLL VZW M1400R-4[6] & M1250R(i)-4[6]	
		SIZE SCALE: 1:6	DWG. NO. K1672KT-T / K1672KT-B
FINISHED WEIGHT:		SHEET 1 OF 1	