

Steel and Mounts



Accessories



Grounding



Safety



Manufacturing, Supply and Design

HDF SERIES

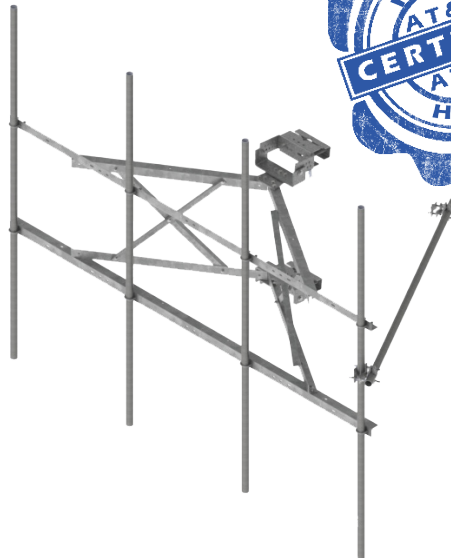


Kenwood's T167x HDF series
Frames designed and certified
in accordance with carrier's specifications.

• Pipe or Angle face available

T1670KT

- **AT&T Heavy 5 Certified (4 antenna pipes)**
- 10.5 or 12.5 foot face with (1) tieback
- Certified to hold **1500 lbs per sector @ 90mph (no ice)**
- Certified to hold **3000 lbs per sector @ 60mph with ice**
- 500 lb man load
- Includes attachment hardware for up to four 2-3/8" OD mast pipes

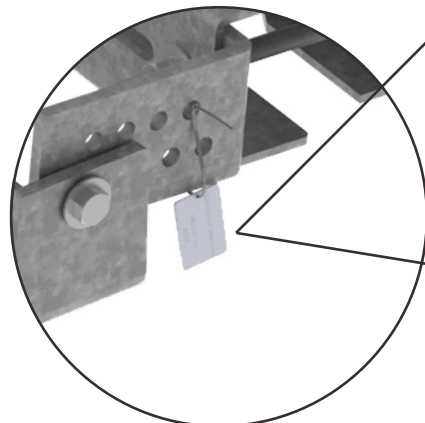
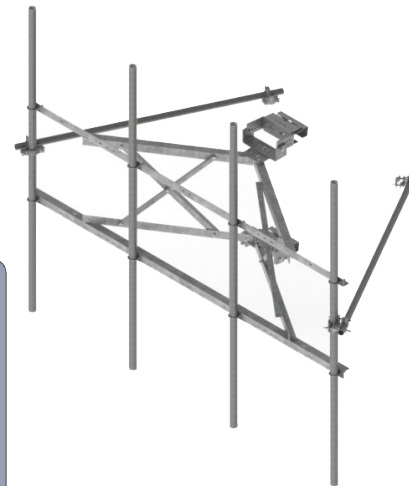


T1671KT

- **AT&T Heavy 10 Certified (4 antenna pipes)**
- 10.5 or 12.5 foot face with (2) tieback
- Certified to hold **2650 lbs per sector @ 120mph (no ice)**
- Certified to hold **5300 lbs per sector @ 60mph with ice**
- 500 lb man load
- Includes attachment hardware for up to four 2-7/8" OD mast pipes

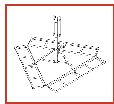


- **M1400R-4[6] and M1250R(i)-4[6] Certified (4 antenna pipes)**
- 10.5 or 12.5 foot face with (2) tieback
- Certified to hold **2650 lbs per sector @ 140mph (no ice)**
- Certified to hold **5300 lbs per sector @ 50mph with ice**
- 500lb man load
- Includes attachment hardware for up to four 2-7/8" OD mast pipes



Kenwood Telecom
 888-439-0500
 Mount Classification
 AT&T / VZW
 Site / Address
 Date

- **Stainless Steel embossed dog tags**
- **Tags are embossed with:**
 - Date
 - HDF part number
 - AT&T / VZW mount class
 - Site name and number included on tag, if available
 - Custom information can be added at customer's request



Steel and Mounts



Accessories



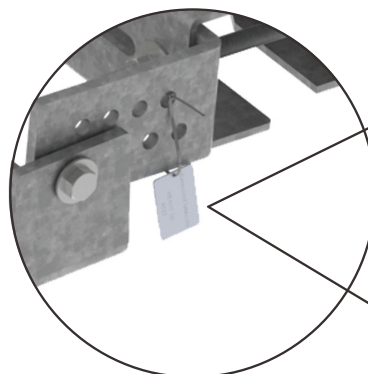
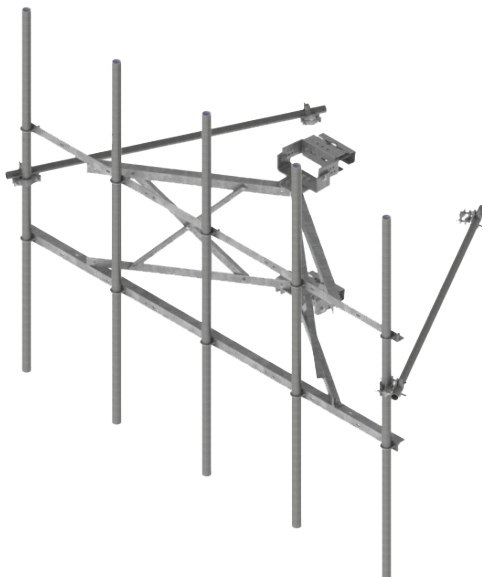
Grounding



Safety

HDF SERIES

Manufacturing, Supply and Design



Kenwood Telecom
888-439-0500
Mount Classification
• AT&T / VZW
Site / Address
Date

- **Stainless Steel embossed dog tags**
- **Tags are embossed with:**

- Date
- HDF part number
- AT&T / VZW mount class
- Site name and number included on tag, if available
- Custom information can be added at customer's request

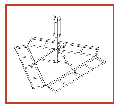
T1672KT

- **AT&T Heavy WLL** Certified (**5 antenna pipes**)
- 10.5 or 12.5 foot face with (2) tieback
- Certified to hold **2650 lbs per sector @** 120mph (no ice)
- Certified to hold **5300 lbs per sector @** 60 mph **with ice**
- 500 lb man load
- Includes attachment hardware for up to five 2-7/8"OD mast pipes

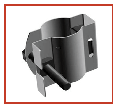
- **M140R-4[6]** and **M1250R(i)-4[6]** Certified (**5 antenna pipes**)
- 10.5 or 12.5 foot face with (2) tieback
- Certified to hold **2650 lbs per sector @** 140mph (no ice)
- Certified to hold **5300 lbs per sector @** 50mph **with ice**
- 500lb man load
- Includes attachment hardware for up to four 2-7/8" OD mast pipes

Guyed / SST / Self Supported Tower Applications - T167xKT12 Series

CEQ NUMBER	Description	Kenwood P/N
ANT.15946	One Sector Heavy 5 Frame and Guyed / SST / Self Support Tower Attachment Hardware - Mast Pipes Not included	T1670KT12
ANT.15947	One Sector Heavy 10 Frame and Guyed / SST / Self Support Tower Attachment Hardware - Mast Pipes Not included	T1671KT12
ANT.15948	One Sector Heavy WLL Frame and Guyed / SST / Self Support Tower Attachment Hardware - Mast Pipes Not included	T1672KT12
ANT.15940	Three Sector Heavy 5 Frame and Guyed / SST / Self Support Tower Attachment Hardware - Mast Pipes not Included	T1670KT12-3S
ANT.15941	Three Sector Heavy 10 Frame and Guyed / SST / Self Support Tower Attachment Hardware - Mast Pipes not Included	T1671KT12-3S
ANT.15942	Three Sector Heavy WLL Frame and Guyed / SST / Self Support Tower Attachment Hardware - Mast Pipes not Included	T1672KT12-3S



Steel and Mounts



Accessories



Grounding



Safety

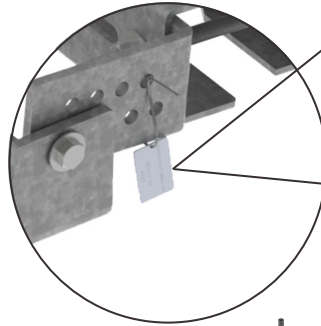
HDF SERIES

Manufacturing, Supply and Design

T1671KT-3SM

- **AT&T Heavy 10** Certified (**4 antenna pipes per sector**)
- 10.5 or 12.5 foot face with (2) tieback
- Certified to hold **2650 lbs per sector @** 120mph (no ice)
- Certified to hold **5300 lbs per sector @** 60 mph **with ice**
- 500 lb man load
- Includes attachment hardware for up to four 2-7/8" OD mast pipes

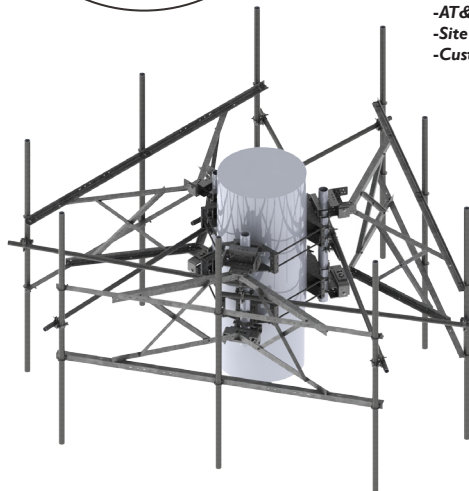
- **M1400R-4[6]** and **M1250R(i)-4[6]** Certified (**4 antenna pipes per sector**)
- 10.5 or 12.5 foot face with (2) tieback
- Certified to hold **2650 lbs per sector @** 140mph (no ice)
- Certified to hold **5300 lbs per sector @** 50mph **with ice**
- 500lb man load
- Includes attachment hardware for up to four 2-7/8" OD mast pipes



Kenwood Telecom
888-439-0500
Mount Classification
• AT&T / VZW
Site / Address
Date

- **Stainless Steel embossed dog tags**
- **Tags are embossed with:**

- Date
- HDF part number
- AT&T / VZW mount class
- Site name and number included on tag, if available
- Custom information can be added at customer's request

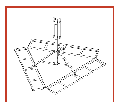


Monopole Applications - T167xKT12-3SM

CEQ NUMBER	Description	Kenwood P/N
ANT.15937	Three Sector Heavy 5 Frame and Monopole Attachment Hardware - Mast Pipes not Included	T1670KT12-3SM
ANT.15938	Three Sector Heavy 10 Frame and Monopole Attachment Hardware - Mast Pipes not Included	T1671KT12-3SM
ANT.15939	Three Sector Heavy WLL Frame and Monopole Attachment Hardware - Mast Pipes not Included	T1672KT12-3SM

Mast Pipes

CEQ NUMBER	Description	Kenwood P/N
ANT.15949	Mast Pipe (QTY 1) - Heavy 5 - 2-3/8" OD Schedule 40 x 126" long	P1000KT10.5
ANT.15950	Mast Pipe (QTY 1) - Heavy 10 / WLL 2-7/8" OD Schedule 40 x 120" long	P1090KT10



Steel and Mounts



Accessories



Grounding



Safety



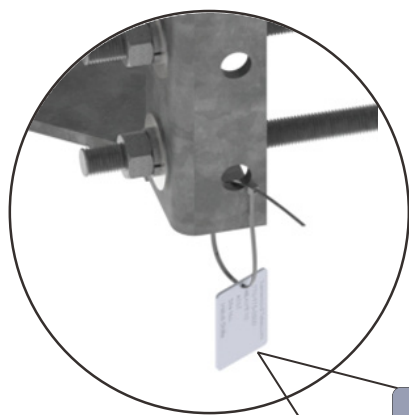
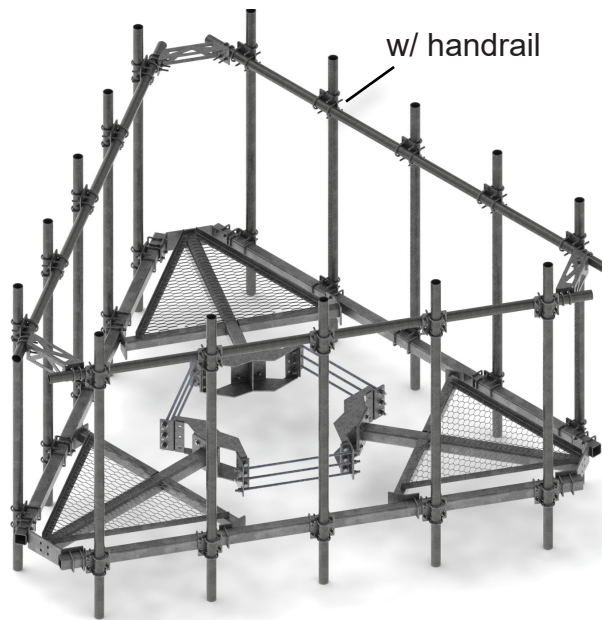
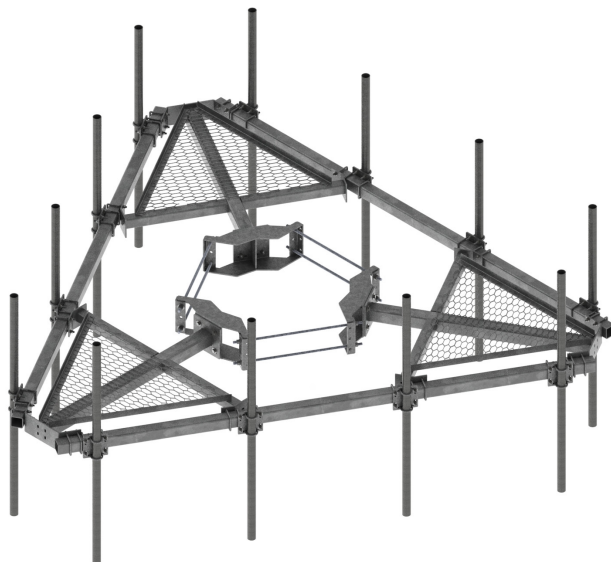
HDF SERIES

Manufacturing, Supply and Design

T1512KT12H

- **AT&T Heavy 10** Certified (4 antenna pipes)
- 10.5 or 12.5 foot face with (2) tieback
- Certified to hold **2650 lbs per sector @** 120mph (no ice)
- Certified to hold **5300 lbs per sector @** 60 mph with ice
- 500 lb man load
- Includes attachment hardware for up to four 2-7/8" OD mast pipes

- **M1400R-4[6]** and **M1250R(i)-4[6]** Certified (4 antenna pipes)
- 10.5 or 12.5 foot face with (2) tieback
- Certified to hold **2650 lbs per sector @** 140mph (no ice)
- Certified to hold **5300 lbs per sector @** 50mph with ice
- 500lb man load
- Includes attachment hardware for up to four 2-7/8" OD mast pipes



Kenwood Telecom
888-439-0500
Mount Classification
• AT&T / VZW
Site / Address
Date

- **Stainless Steel embossed dog tags**
- **Tags are embossed with:**
 - Date
 - HDF part number
 - AT&T / VZW mount class
 - Site name and number included on tag, if available
 - Custom information can be added at customer's request